

A07207 Whitley Petrifoto System - instruction sheet



The Whitley Petrifoto System consists of a compact digital camera, camera adaptor, battery and battery charger, microSDHC card and adapter, light box, power supply and a Petri dish holder. Ensure the camera is outside the workstation when changing the battery or memory cards. A storage case for spare cards is also supplied.

The camera stores images to a microSDHC card and can transmit images if wi-fi use is permitted in the laboratory. The camera may be used separately from the lightbox.

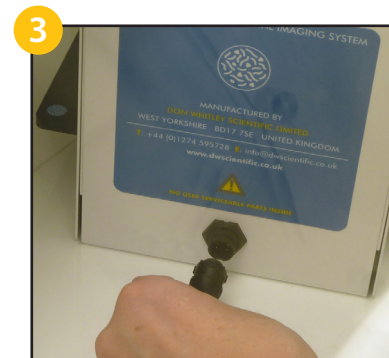


When the Petrifoto is used in an anaerobic workstation, ensure that the workstation is fully commissioned.

Place a fully charged battery and a memory card into the camera.



Transfer all system components into the workstation through the airlock. Transfer is shown in two stages through a small Whitley airlock. All parts can be transferred simultaneously in a large Whitley airlock.



Connect the light box to the power supply.

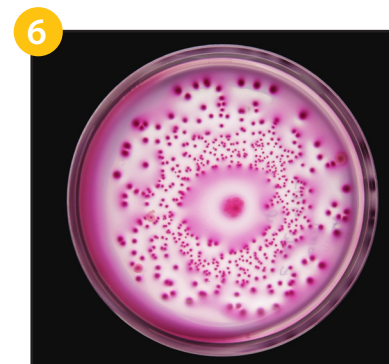


Place the camera onto the camera adaptor. Place a Petri dish in the Petri dish holder.

Turn the camera on. Use base and/or side lighting as required. Zoom in or out as necessary. Take picture(s).



Images 5 and 6:
Pictures taken in the DWS laboratory using a Whitley Petrifoto System.



Wi-Fi Image Transmission:
Refer to the camera Quick Start Guide.

MicroSDHC Cards:
Bring the camera out of the workstation and use either the cable or remove the memory card to transfer images.